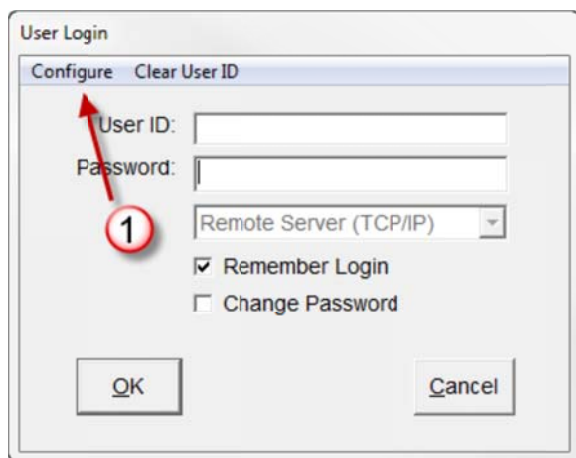
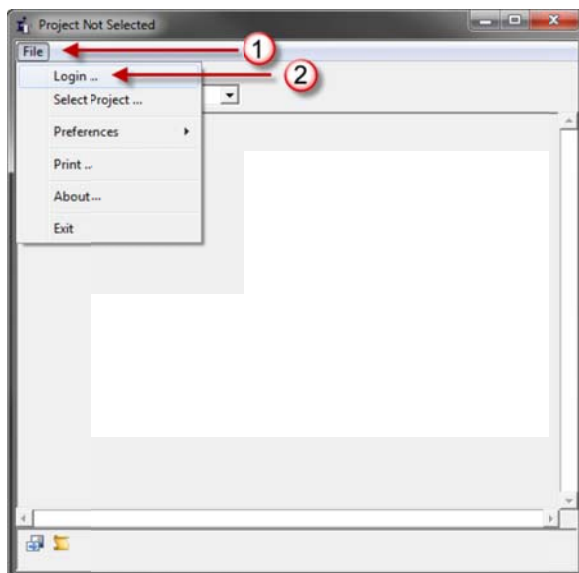


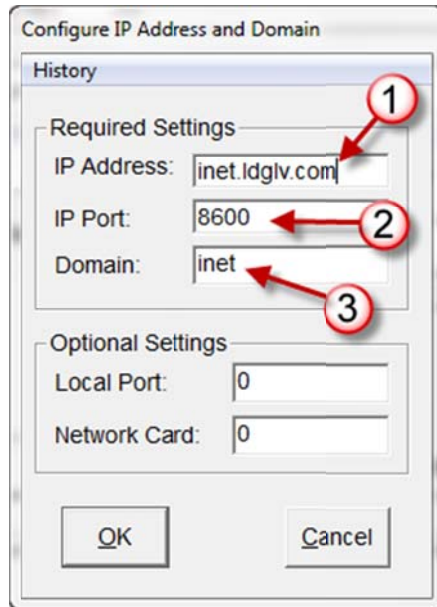


*Using the Litigation Document Group's INET on-line document repository.*

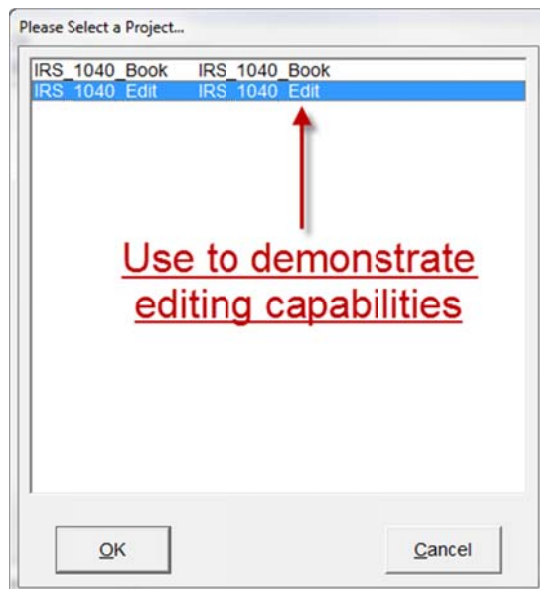
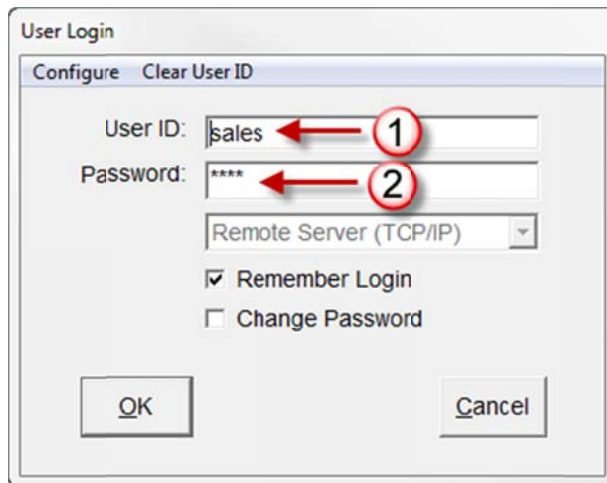
---

Launch the i2kview.exe program.





**\*\*If in the LDG office, the IP Address must be changed to 172.16.2.2\*\***



1. Select Project  
 2. Page Tree  
 3. Print  
 4. Page Tag Palette  
 5. Search Page Tags  
 6. Search Function  
 7. Fit Page Horizontal  
 8. Fit Page Vertical  
 9. Rotate Page Counter-Clockwise  
 10. Rotate Page Clockwise  
 11. Zoom Out  
 12. Zoom In  
 13. Split Page Window  
 14. Zoom Percentage  
 15. Sticky Note  
 16. Annotation  
 17. Redaction  
 18. Highlight  
 19. Draw  
 20. Clips (Unavailable)

21. Move to Image Key  
 22. Auto Scroll Pages  
 23. Previous Box  
 24. Next Box  
 25. Previous Folder  
 26. Next Folder  
 27. Previous Document  
 28. Next Document  
 29. Previous Paper Clip  
 30. Next Paper Clip  
 31. Previous Page  
 32. Next Page

Web-00002 (Page 2 of 175)

1040

NOTE: THIS BOOKLET DOES NOT CONTAIN TAX FORMS

**INSTRUCTIONS**  
 Including Instructions for Schedules A, B, C, D, E, F, J, L, M, and SL

**2009**

**e-file** makes doing your taxes faster and easier.

**freefile** is the easy, fast, and free way to electronically file for those who qualify.

Get a faster refund, reduce errors, and save paper. For more information on IRS e-file and Free File, see page 6 or click on IRS e-file at www.irs.gov.

**MAKING WORK PAY CREDIT**  
 It says to work. You may be able to take this credit if you have earned income from work.

**UNEMPLOYMENT COMPENSATION**  
 You do not have to pay tax on unemployment compensation or up to \$7,400 per recipient. Amounts over \$2,400 per recipient are still taxable.

**CREDIT FOR NONBUSINESS ENERGY PROPERTY**  
 You may be able to take this credit for certain energy-saving improvements to your main home.

**DEDUCTION FOR MOTOR VEHICLE TAXES**  
 You may be able to deduct state or local sales or excise taxes you paid on the purchase of a new motor vehicle after February 15, 2009.

For details on these and other changes, see pages 6 and 7.

IRS Department of the Treasury Internal Revenue Service

Web-00002

eBates number